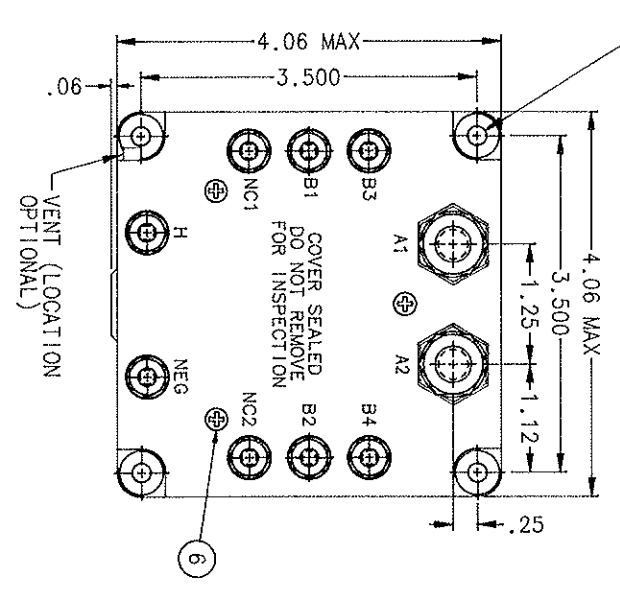


FAA/PMA

REV	DESCRIPTION	DATE	APPROVED
1	313791 REDRAWN, ADDED ITEMS 11 AND 12	96-10-24	R

4 MTG HOLES
 .196⁺.010 DIA HOLE



CONSTRUCTION
 MAIN CONTACTS
 VOLTAGE (NOMINAL)
 CURRENT
 AUXILIARY CONTACTS
 B1-B2-B3-B4

NC-NC
 VOLTAGE
 CURRENT

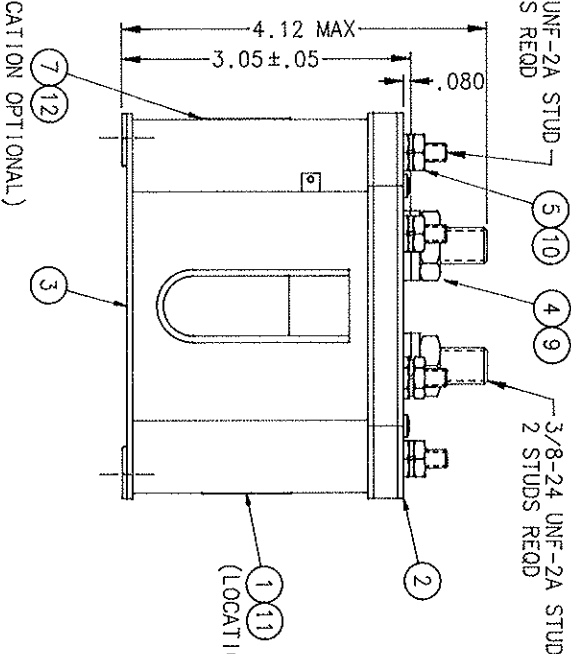
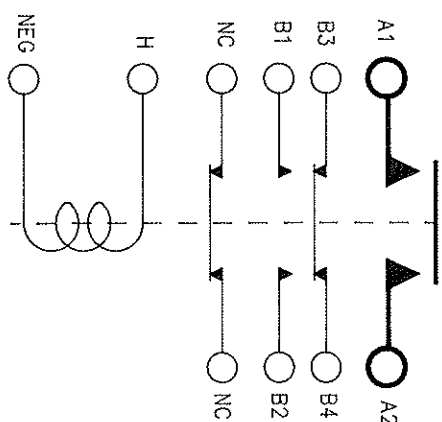
FORM Z TRANSFERS BEFORE
 MAIN CONTACTS CLOSE
 SPST - NC
 28 VDC
 5 AMP SWITCHING
 10 AMP CONTINUOUS
 30 AMP .1 SEC

COIL DATA
 VOLTAGE
 PICKUP, MAX
 DROPOUT
 DUTY

ENVIRONMENTAL DATA
 AMBIENT TEMPERATURE
 LIFE ELECTRICAL
 LIFE MECHANICAL
 WEIGHT MAX

GASKET SEALED (VENTED)
 SPST N.O.
 28 VDC
 1500 AMP INRUSH
 1000 AMP 30 SEC

-55°C TO +71°C MAX
 50,000 CYCLES
 100,000 CYCLES
 2 LB 14 OZ



10-32 UNF-2A STUD
 8 STUDS RECD

3/8-24 UNF-2A STUD
 2 STUDS RECD

VENT (LOCATION OPTIONAL)

111 (LOCATION OPTIONAL)

112 (LOCATION OPTIONAL)

FIND NO	QTY	REC'D	PART OR IDENTIFYING NO	NOMENCLATURE OR DESCRIPTION	DRAWING OR SPECIFICATION	MATERIAL OR NOTE
12	1		39529-024	OVERLAY		
11	1		39529-001	OVERLAY		
10	8		51810-054	LOCKWASHER, SPLIT, #10		BRONZE
9	2		51807-084	LOCKWASHER, SPLIT, 3/8		BRONZE
8						
7	1		58400-004	PLATE - FAA/PMA		
6	3		51200-020	SCREW, #4 X .25 LG, PAN HD		SST
5	8		50410-084	NUT, 10-32, 1/8 THK, 3/8 HEX		BRASS
4	2		50407-164	NUT, 3/8-24, 7/32 THK, 5/8 HEX		BRASS
3	1		35182-010	RELAY ASSEMBLY - PRIMARY		
2	1		35148-001	PLATE - BASE COVER		
1	1		16043-001	PLATE - NAME		

UNLESS OTHERWISE SPECIFIED
 DIMENSIONS ARE IN INCHES
 TOLERANCES IN

2 PL DEC. 3 PL DEC. ANGLES
 ±.06 ±.010 ±.1°

DR BY: DKN 96-11-19
 CHK BY: RS 96/11/21
 ENGR: DT 96/10/27
 MFG: [Signature] 96/11/26
 RELEASE: [Signature]
 CONTR. NO.:
 GOVT APPVL:

HARTMAN ELECTRICAL MANUFACTURING
 MANSFIELD, OHIO

GENERATOR START CONTACTOR
 400 AMP, 28 VDC

SIZE: C
 CODE IDENT: 74063
 DWG NO.: A-703B

SCALE: NONE SHEET: 093